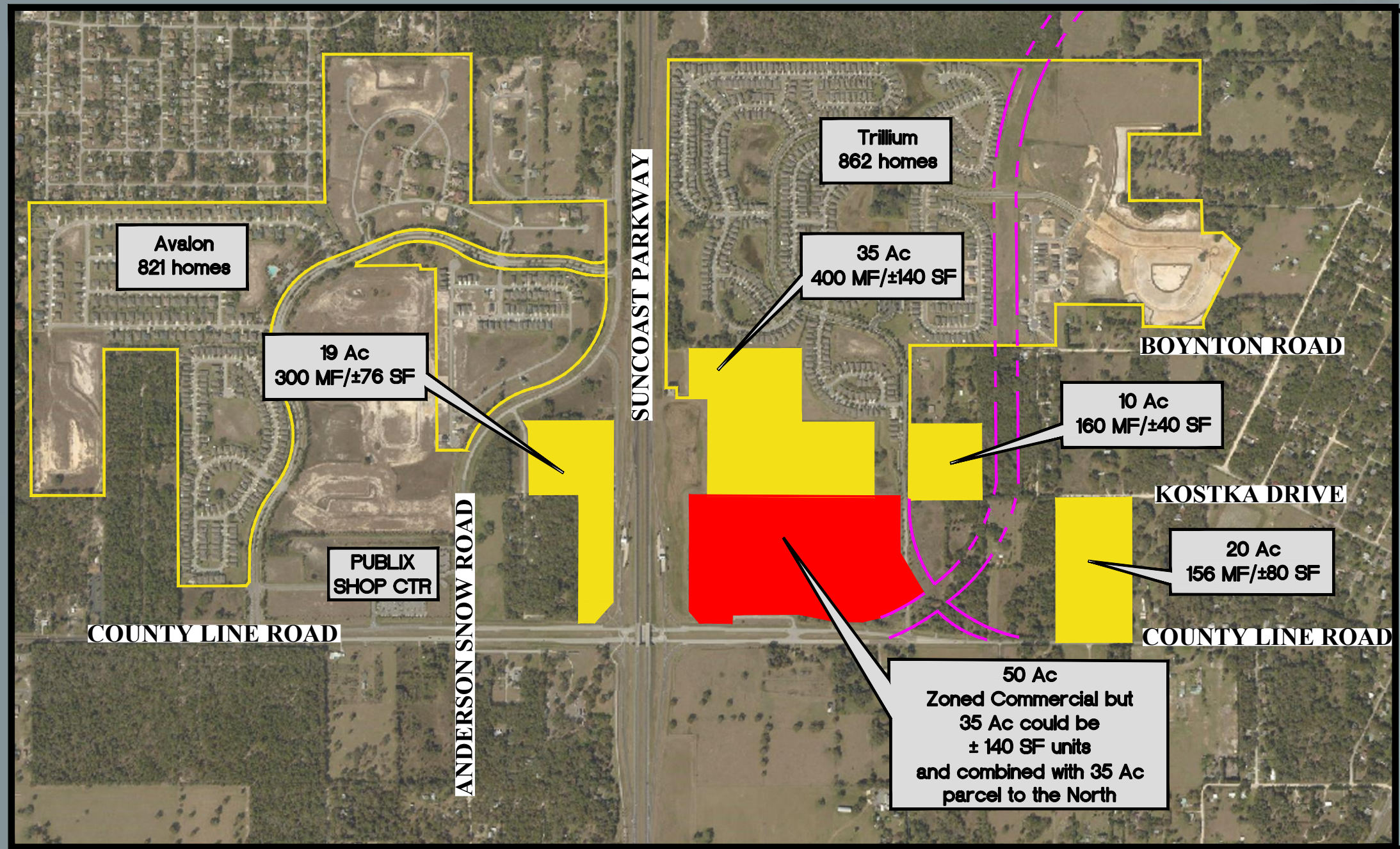


COLOR LEGEND

- MULTIFAMILY
- MULTIFAMILY & SINGLE FAMILY
- RETAIL / COMMERCIAL
- SINGLE FAMILY



PROPERTIES LEGEND

- A 19.14 ACRES CYPRESS CREEK PARCEL 6 MILLER FAMILY HOMES SUN CITY, HILLSBOROUGH COUNTY, FL
- B 12 ACRES - PRETTY POND SITE ZEPHYRHILLS, PASCO COUNTY, FL
- C 24.80 ACRES - WIRE RANCH SITE ZEPHYRHILLS, PASCO COUNTY, FL
- D 13.1± ACRES FORT KING PHASE II SE CORNER OF DAUGHTERY ROAD AND FORT KING HIGHWAY PASCO COUNTY, ZEPHYRHILLS, FL
- E 10.6 ACRES, MOL 6655 FORT KING RD ZEPHYRHILLS, FL (ADJACENT 27.45 ACRE PARCEL IS AVAILABLE FOR PURCHASE SEPARATELY)
- P 24 ACRES ZEPHYRHILLS, FL
- Q 27.13 ACRES NEBRASKA / BEARSS TAMPA, FL MULTIFAMILY (20 UNITS PER ACRE)
- S 23 ACRES ZEPHYRHILLS, FL
- T 17 ACRES SUN CITY CENTER/RUSKIN, FL 296 MULTIFAMILY
- U 1.35 ACRES 46 CONDOMINIUM UNITS 16 PRIVATE BOAT SLIPS
- V 6.9 ACRES VISTA PARK MULTIFAMILY
- F 20 ACRES 156 MULTIFAMILY OR ±80 SINGLE FAMILY
- G 10 ACRES 160 MULTIFAMILY OR ±40 SINGLE FAMILY
- H 35 ACRES 400 MULTIFAMILY OR ±140 SINGLE FAMILY
- I 19 ACRES 300 MULTIFAMILY OR ±76 SINGLE FAMILY
- J 886 ACRES 160 ACRES FOR 1,300 MULTIFAMILY AND 2,400 ACRES 2,400 SINGLE FAMILY
- K 450 ACRES 700 MULTIFAMILY AND 1,500 SINGLE FAMILY
- R 26 ACRES 624 MULTIFAMILY OR 450 SINGLE FAMILY
- W 26.21 ACRES 234 MULTIFAMILY OR 135 SINGLE FAMILY
- X 40 ACRES PASCO - HERNANDO COUNTY LINE ROAD
- Mc 80.6 ACRES AND 68.9 ACRES MULTIFAMILY OR SINGLE FAMILY HAINES CITY - POLK COUNTY, FL
- AA 79.2 ACRES (59 ACRES ± UPLAND) FUTURE LAND USE (RETAIL/OFFICE/RESIDENTIAL) (UP TO 24 UNITS PER ACRE)
- BB 35± ACRES VILLAGES OF PASADENA HILLS DADE CITY, FL
- CC 23.26 ACRES DADE CITY, FL
- L 27 ACRES ON LAKE BROOKER FRONTAGE ON N DALE MABRY 19510 HOLLY LANE LUTZ, FL (±28 SINGLE FAMILY)
- M 425 ACRES MONDON HILL ROAD 919± SINGLE FAMILY
- Z 440.33 ACRES 999 SINGLE FAMILY
- DD 36.96 ACRES SINGLE FAMILY - DADE CITY, FL
- EE 120 ACRES SIGNLE FAMILY - DADE CITY, FL
- FF 309± ACRES SINGLE FAMILY - HUDSON, PASCO COUNTY, FL
- N 50 ACRES ZONED COMMERCIAL BUT 35 AC COULD BE ±140 SINGLE FAMILY UNITS AND COMBINED WITH 35 ACRE PARCEL TO THE NORTH
- O 12.7 ACRES ZONED COMMERCIAL BUT SUBJECT TO M-AP1 & M-AP2 REGULATIONS
- SR 15 ACRES SR54 COMMERCIAL
- GG 27.77 ACRES VENETIAN ISLES 388 MULTIFAMILY UNITS
- HH 67 ACRES RESIDENTIAL - SUNSET HWY 5 ACRES COMMERCIAL LUTZ, HILLSBOROUGH COUNTY, FL
- II 14.18 ACRES - LAKE BERNADETTE WESLEY CHAPEL/ZEPHYRHILLS, FL
- JJ 135.35 ACRES - SUMMIT VIEW SINGLE FAMILY SITE 306 SINGLE FAMILY 100 TOWNHOMES

